



NEW CONNECTORS FOR IVD Technologies

Our commitment to delivering reliable performance and innovative fluid management components is unmatched when meeting the needs of front-line workers and exceeding expectations for performance. The new 20 Series quick connects are another example of that commitment as we continue to make a positive impact during the global pandemic.

FEATURES & BENEFITS

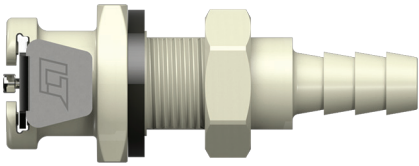
- Female polypropylene panel mount configuration with a 1/4-28 flat bottom port and hose barb terminations.
- Male polypropylene panel mount connector with a 1/4-28 flat bottom port termination.
- Gasket seal feature that enables a seal between the connector and assembly interface to prevent leaks and contamination.
- Panel nut made in non-corrosive plastic materials to prevent reaction with IVD media.

SPECIFICATIONS

- **Materials:**
 - Bodies & terminations: medical-grade polypropylene
 - Internal valves: medical-grade polypropylene
 - Internal valve springs: 316 stainless steel
 - O-rings: peroxide-cured EPDM (others available)
 - Thumb-latch: stainless steel
 - External springs & pins: stainless steel
- **Performance Ratings:**
 - Operating pressure: vacuum to 120psi; (8.3bar)
 - Temperature: 32°F to 160°F; (0°C to 71°C)
 - Flow capacity: 1/8" (3.2 mm)
 - Fits tubing IDs: 1/16" (1.6 mm) - 1/4" (6.4 mm)
 - Sterilization: gamma; 50kGy irradiation max

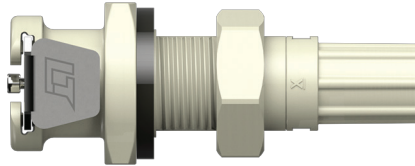
NEW CONNECTORS FOR IVD Technologies

QUICK CONNECT COUPLINGS



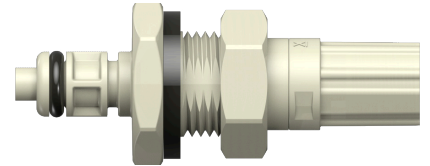
20PPV-SE3-04GSPNMALD

LinkTech 20PP Series Panel Mount, Gasket Seal Socket Female, Valved, 1/4" Hose Barb, Polypropylene, Molded Almond, EPDM O-ring and Gasket, and Polypropylene Panel Nut



20PPV-SE19-04GSPNMALD

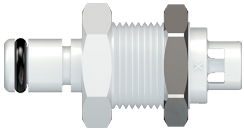
LinkTech 20PP Series Panel Mount, Gasket Seal Female, Valved, 1/4-28 Flat Bottom Port, Polypropylene, Molded Almond, EPDM O-ring and Gasket, and Polypropylene Panel Nut



20PPV-PE19-04GSPNMALD

LinkTech 20PP Series Panel Mount, Gasket Seal Plug Male, Valved, 1/4-28 Flat Bottom Port, Polypropylene, Molded Almond, EPDM O-ring and Gasket, and Polypropylene Panel Nut

More Quick Connects for IVD Applications



20AC-PB3-01

LinkTech 20AC Series Panel Mount Male, Non-valved, 1/16" HB, Natural Acetal, Buna N



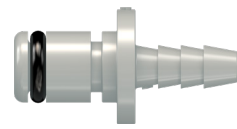
20ACV-PB2-04

LinkTech 20AC Series Straight Male, Valved, 1/4" HB, Natural Acetal, Buna N



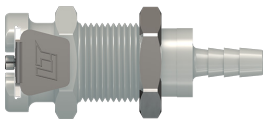
20ACV-SB2-04

LinkTech 20AC Series Straight Female, Valved, 1/4" HB, Natural Acetal, Buna N



20PP-PE2-02

LinkTech 20PP Series Straight Male, Non-valved, 1/8" HB, Molded Grey Color, Polypropylene, EPDM



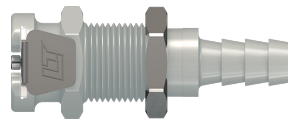
20PP-S3-02

LinkTech 20PP Series Panel Mount Female, Non-valved, 1/8" HB, Molded Grey Color, Polypropylene



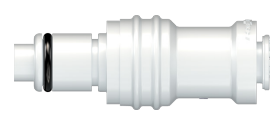
20PPV-PE4-04

LinkTech 20PP Series Elbow Male, Valved, 1/4" HB, Molded Grey Color, Polypropylene, EPDM



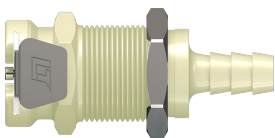
20PPV-SE3-04

LinkTech 20PP Series Panel Mount Female, Valved, 1/4" HB, Molded Grey Color, Polypropylene



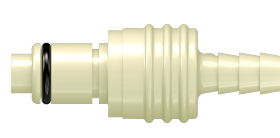
40ACV-PB17-04

LinkTech 40AC Series Straight Male, Valved, 1/4" O.D. Push-In, Natural Acetal, Buna N



40PP-S3-04MALD

LinkTech 40PP Series Panel Mount Female, Non-valved, 1/4" HB, Molded Almond Color, Polypropylene



40PPV-PE2-04MALD

LinkTech 40PP Series Straight Male, Valved, 1/4" HB, Molded Almond Color, Polypropylene, EPDM



60PPV-PE4-08

LinkTech 60PP Series Elbow Male, Valved, 1/2" HB, Polypropylene, EPDM



60PPV-SE1-08

LinkTech 60PP Series Male Threaded Female, Valved, 1/2" MNPT, Polypropylene, EPDM